



Baltic

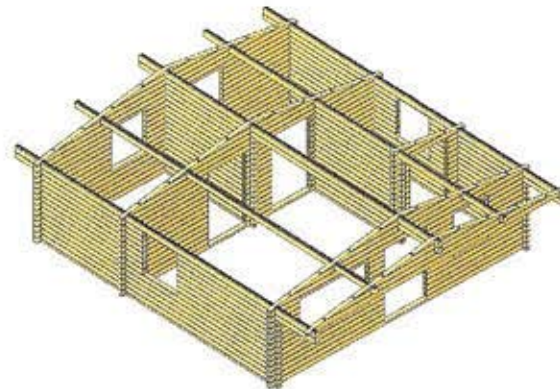
6 x 6 m (5,85 x 5,86) - IE10068010

Basement size is shown in brackets

- Wall thickness 68 mm;
- Triple grooved interlock;
- Wall boards are flat faced with softly rounded edges;
- The corbel of the roof around the whole house;
- Terrace is included;
- Double Glazed windows and door;
- The cabin includes the floor;
- Double roof construction (for insulation, wich is extra);
- Windows can be switched for ventilation;
- Floor boards 26 mm thickness.



Roofing shingles are supplied as optional extras.

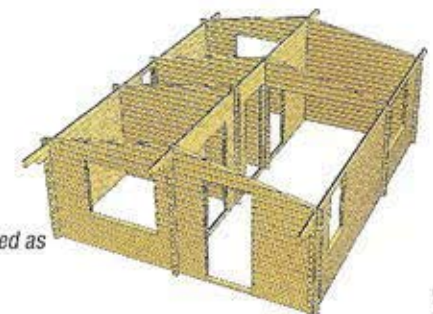
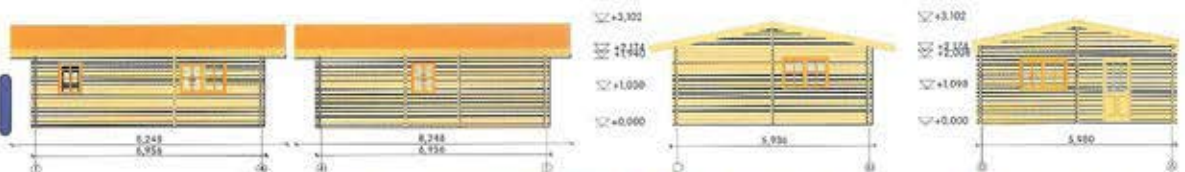


Donegal

6 x 7 m (5,85 x 6,85) - IE10068020

Basement size is shown in brackets

- Wall thickness 68 mm;
- Triple grooved interlock;
- Wall boards are flat faced with softly rounded edges;
- The corbel of the roof around the whole house;
- Double Glazed windows and door;
- The cabin includes the floor;
- Double roof construction (for insulation, wich is extra);
- Windows can be switched for ventilation;
- Floor boards 26 mm thickness.



Roofing shingles and veranda are supplied as optional extras.